

TEA FOR TOM QUIZ

IN AID OF

the Tom
Bowdidge
YOUTH CANCER
FOUNDATION

TEST YOUR AFTERNOON TEA GENERAL KNOWLEDGE

SUGGESTED DONATION OF £1 TO PLAY

- 1 How many cups of tea are consumed in UK in a day?
 - a. 165 million
 - b. 83 million
 - c. 207 million
 - d. 124 million
- 2 When was tea first introduced to the United Kingdom?
 - a. 1723
 - b. 1650
 - c. 1509
 - d. 1792
- 3 Which country produces the most tea?
 - A. India
 - B. USA
 - C. Sri Lanka
 - D. China
- 4 What is Paddington Bears favourite type of sandwich?
 - A. Cheese and pickle
 - B. Peanut butter
 - C. Marmalade
 - D. Cucumber
- 5 In England, which is the most popular way of saying scone: with a “con” or “cone” sound?
- 6 Is a Devonshire cream tea
 - A) A scone with cream, then topped with jam?
 - B) The other way round: a scone with jam, then topped with cream
- 7 The only tea plantation in the UK is in which county?
- 8 Are scones originally from England, Scotland or Wales?



1. PHOTOCOPY THE QUESTIONS AS MANY TIMES AS YOU NEED.
2. PICK A QUIZ MASTER OR JUST HAND OUT UPON ENTRY.
3. ORGANISE A PRIZE FOR THE WINNER.

TEA FOR TOM QUIZ

TEST YOUR AFTERNOON TEA GENERAL KNOWLEDGE

SUGGESTED DONATION OF £1 TO PLAY

9

In which month is National Scone Day?

- A. March
- B. May
- C. June
- D. August

10

What was the weight of the world's largest scone (to the nearest kg)?

11

Where does the battenburg cake originate from and what colour is it?

12

In which year did the first series of The Great British Bake Off take place?

- A. 2008
- B. 2009
- C. 2010
- D. 2011

13

What day and month is National Cream Tea Day in the UK?

14

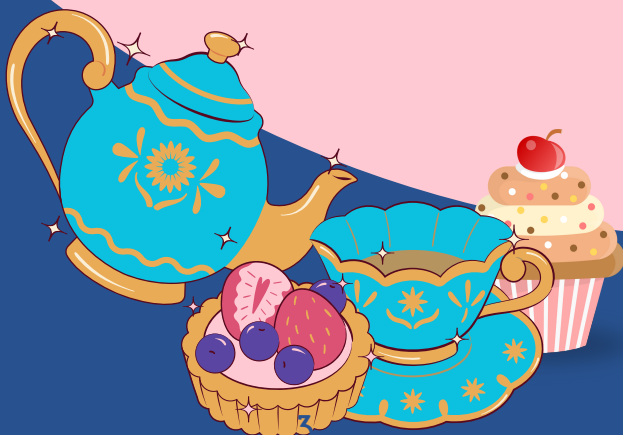
At what time is 'afternoon tea' traditionally taken? At 3 O'clock or 4 o'clock in the afternoon?

15

Which company introduced the Pyramid tea bag?

16

Which English tea word is derived from the Chinese word for tea?



1. PHOTOCOPY THE QUESTIONS AS MANY TIMES AS YOU NEED.
2. PICK A QUIZ MASTER OR JUST HAND OUT UPON ENTRY.
3. ORGANISE A WINNING AND LOSING PRIZE.

TEA FOR TOM QUIZ

ANSWER SHEET

IN AID OF



- 1)
- 2)
- 3)
- 4)
- 5)
- 6)
- 7)
- 8)
- 9)
- 10)
- 11)
- 12)
- 13)
- 14)
- 15)
- 16)

TEA FOR TOM QUIZ

ANSWERS

- 1) 165 MILLION
- 2) B - 1650
- 3) D - CHINA
- 4) MARMALADE
- 5) "CON". TWO OUT OF THREE OF US SAY IT THIS WAY
- 6) A - DEVONSHIRE CREAM TEA IS A SCONE TOPPED WITH CREAM, THEN JAM
- 7) CORNWALL, THE TREGOTHNAN TEA ESTATE
- 8) SCOTLAND
- 9) B - MAY
- 10) 288
- 11) GERMANY, PINK & YELLOW
- 12) 2010
- 13) LAST FRIDAY IN JUNE
- 14) AT 4 O'CLOCK
- 15) PG TIPS
- 16) CHAR